

ST. ANNE'S RECTORY AND PARISH HOUSE RENOVATION

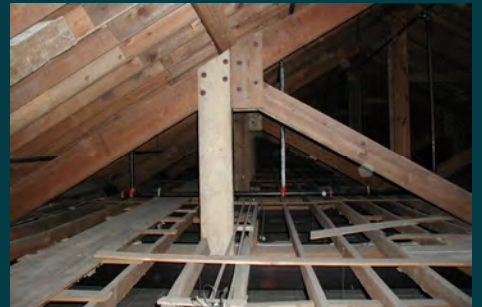
199 Duke of Gloucester Street, Annapolis, Maryland

St. Anne's Episcopal Church is on Church Circle in the heart of Annapolis's historic district. The Rectory and Parish House for the congregation are in a pair of separate buildings located down the street. The Rectory is in a mid-19th century residence, and now is used as clergy and staff office space as well as for pastoral counseling. The Parish house is adjacent, attached by enclosed passages and consists of a mix of various 20th century buildings and their additions.

Halpern Architects assisted the congregation of St. Anne's to restore the historic Rectory, and upgrade the Parish house. The project included improving the spaces for both the congregation and its youth groups, providing for Sunday school classrooms, adapting adult classrooms to a pre-school, reworking the existing meeting rooms, and rehearsal spaces. Halpern Architects designed the conversion of an existing gymnasium into a multi-purpose assembly room suitable for parties, lectures, recitals and receptions. Halpern Architects prepared a conditions assessment and "restoration procedure manual" for the original historic Rectory. Substantial material conservation work was undertaken on the exterior of the older portions of the buildings including restoring failing building components such as windows, flashing, and other roofing materials. The project scope also included a focus on addressing code compliance, energy efficiency improvements, and accessibility requirements.



Parish House Multi-purpose Assembly Room



Attic space above Assembly Room



Dormer window



Rectory



Entry to Rectory



Entry to Rectory

H A L P E R N

A R C H I T E C T S

914 FOREST DRIVE ANNAPOLIS, MARYLAND 21403

410 263 1909 410 280 2542 facsimile

www.HalpernArchitects.com