

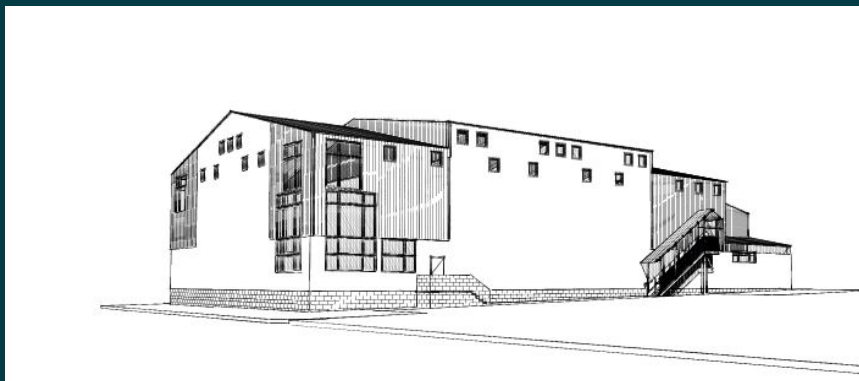
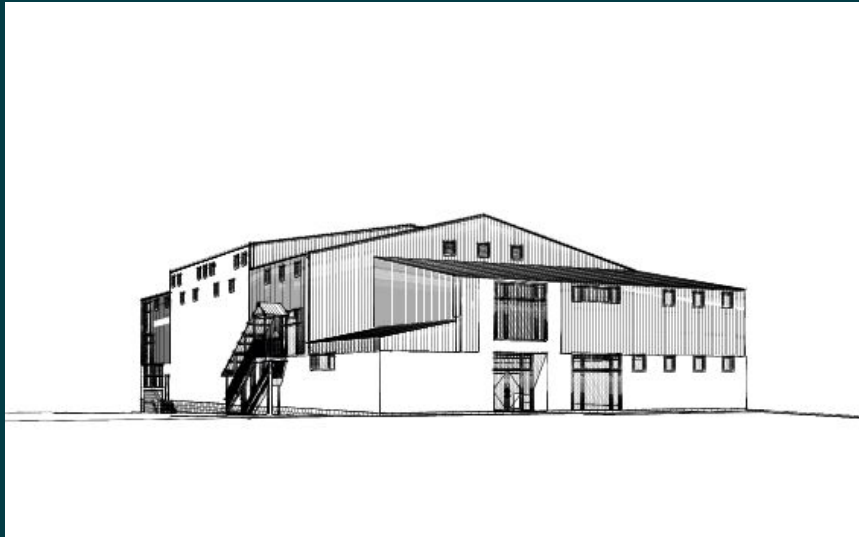
# CLIMBING WALL CLUB

Annapolis, Maryland

---

Halpern Architects was hired by the site developers to design a new 15,000 square-foot shell building to be leased to a gymnasium that supported the local rock and wall climbing community. The exterior was intended to evoke a sense of a rustic mill building, and the craggy nature of a stone mountain. The exterior skin was a mix of cementitious panels and galvanized corrugated steel carefully chosen as cost effective, and low maintenance materials. The windows were carefully sized and placed to create dramatic effects on the climbing walls within the building while controlling and minimizing glare for the climbers inside.

The majority of the building is a single-story, single-span space with a clear height of approximately 40 feet. One end of the building was designed to accommodate a mezzanine of approximately 3,000 square feet. The structure was designed as a factory engineered steel structure.



---

H A L P E R N  
A R C H I T E C T S

914 FOREST DRIVE ANNAPOLIS, MARYLAND 21403

410 263 1909 410 280 2542 facsimile

[www.HalpernArchitects.com](http://www.HalpernArchitects.com)